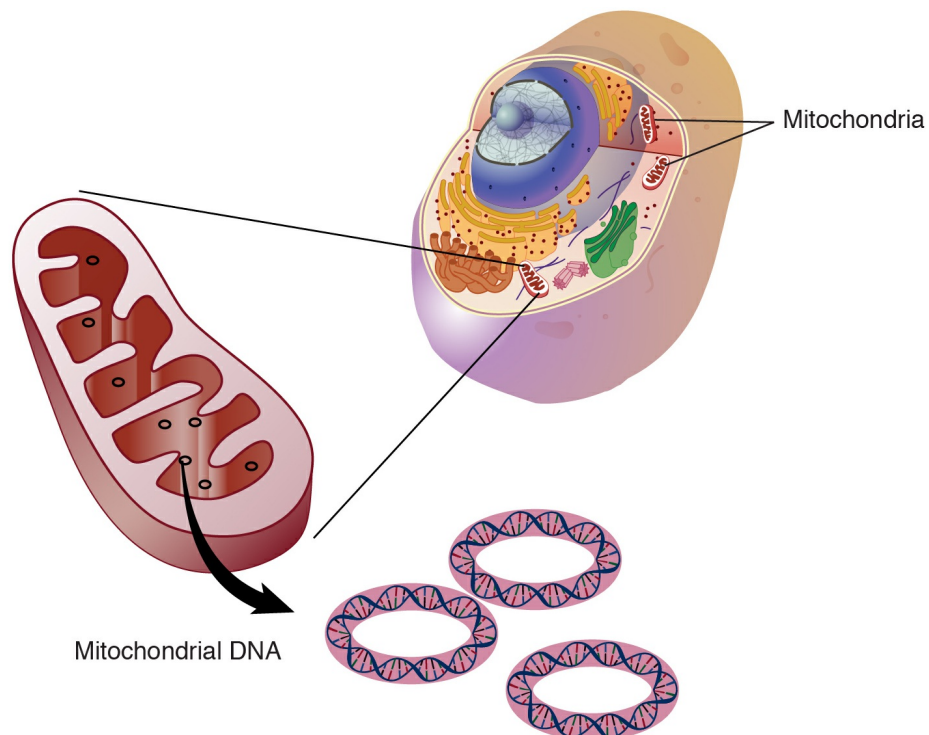


# Mitochondrial DNA

National Human Genome Research Institute (NHGRI)

## Source

National Human Genome Research Institute (NHGRI). [Mitochondrial DNA](#).



Figure

Mitochondrial DNA is the small circular chromosome found inside mitochondria. The mitochondria are organelles found in cells that are the sites of energy production. The mitochondria, and thus mitochondrial DNA, are passed from mother to offspring.