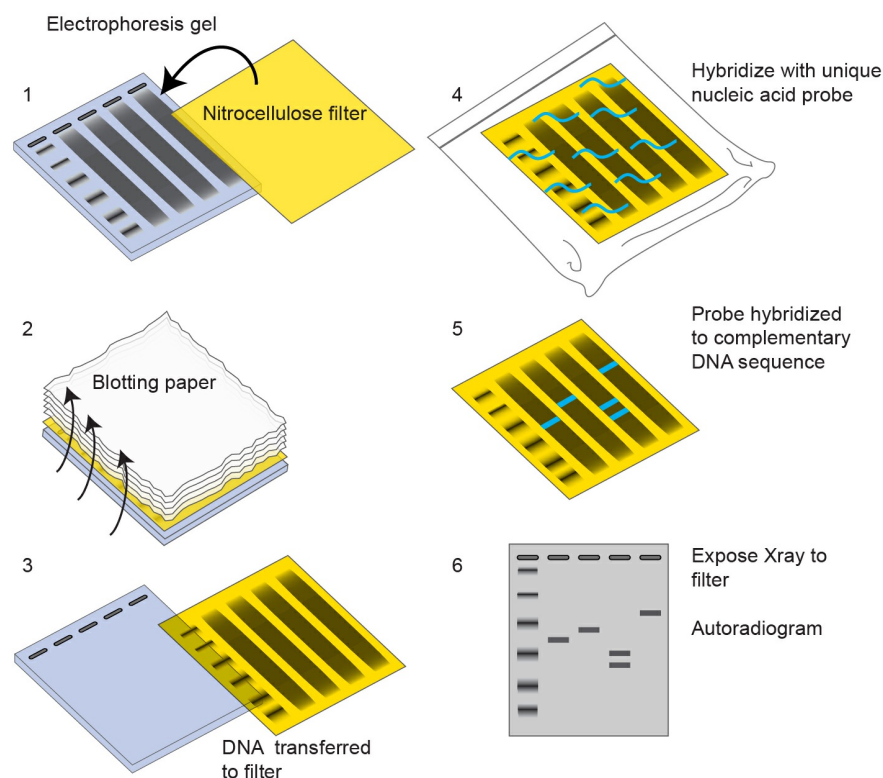


Southern Blot

National Human Genome Research Institute (NHGRI)

Source

National Human Genome Research Institute (NHGRI). *Southern Blot*.



Southern blotting is a laboratory technique used to detect a specific DNA sequence in a blood or tissue sample. A restriction enzyme is used to cut a sample of DNA into fragments that are separated using gel electrophoresis. The DNA fragments are transferred out of the gel to the surface of a membrane. The membrane is exposed to a DNA probe labeled with a radioactive or chemical tag. If the probe binds to the membrane, then the probe sequence is present in the sample.