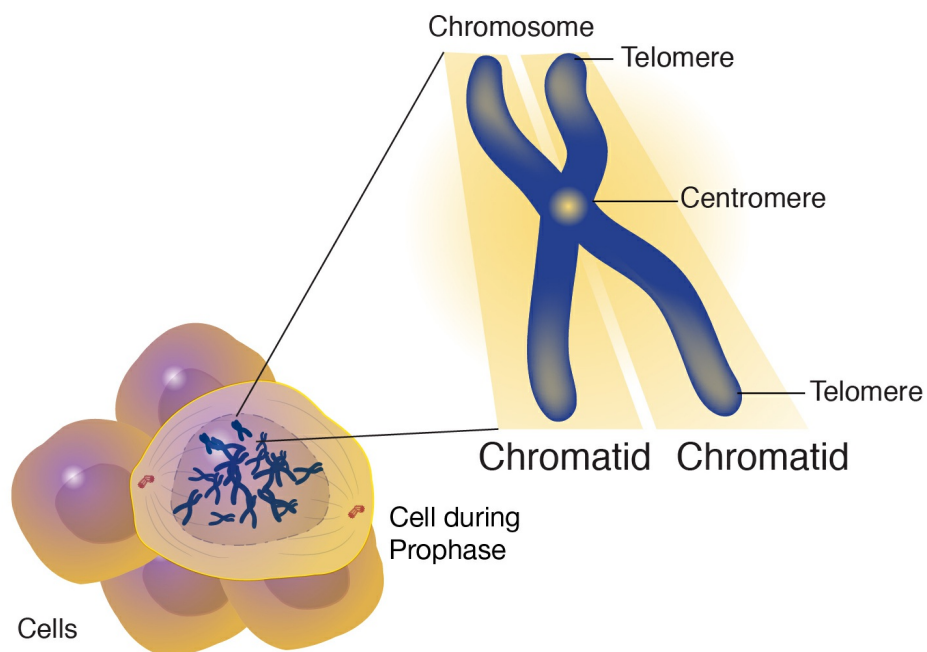


Chromatid

National Human Genome Research Institute (NHGRI)

Source

National Human Genome Research Institute (NHGRI). *Chromatid*.



A chromatid is one of two identical halves of a replicated chromosome. During cell division, the chromosomes first replicate so that each daughter cell receives a complete set of chromosomes. Following DNA replication, the chromosome consists of two identical structures called sister chromatids, which are joined at the centromere.