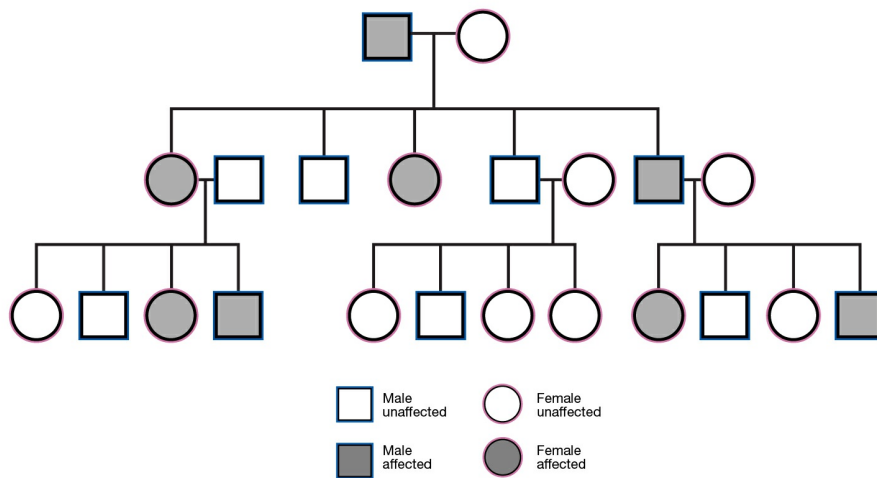


# Inherited

National Human Genome Research Institute (NHGRI)

## Source

National Human Genome Research Institute (NHGRI). *Inherited*.



An inherited trait is one that is genetically determined. Inherited traits are passed from parent to offspring according to the rules of Mendelian genetics. Most traits are not strictly determined by genes, but rather are influenced by both genes and environment.