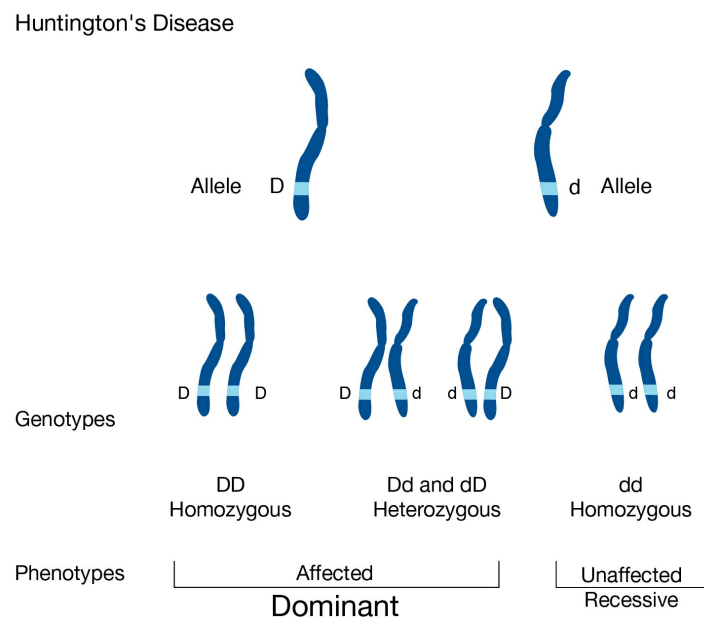


Huntington's Disease

National Human Genome Research Institute (NHGRI)

Source

National Human Genome Research Institute (NHGRI). [Huntington's Disease](#).



Figure

Huntington's disease is an inherited disease characterized by the progressive loss of brain and muscle function. Symptoms usually begin during middle age. The disease is inherited as an autosomal dominant trait, meaning that a single mutated copy of the responsible gene is sufficient to cause the disease.