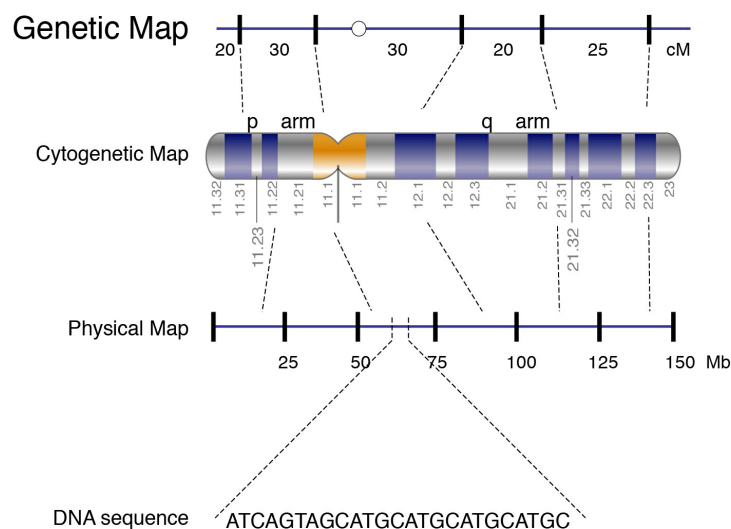


Genetic Map

National Human Genome Research Institute (NHGRI)

Source

National Human Genome Research Institute (NHGRI). *Genetic Map*.



A genetic map is a type of chromosome map that shows the relative locations of genes and other important features. The map is based on the idea of linkage, which means that the closer two genes are to each other on the chromosome, the greater the probability that they will be inherited together. By following inheritance patterns, the relative locations of genes along the chromosome are established.