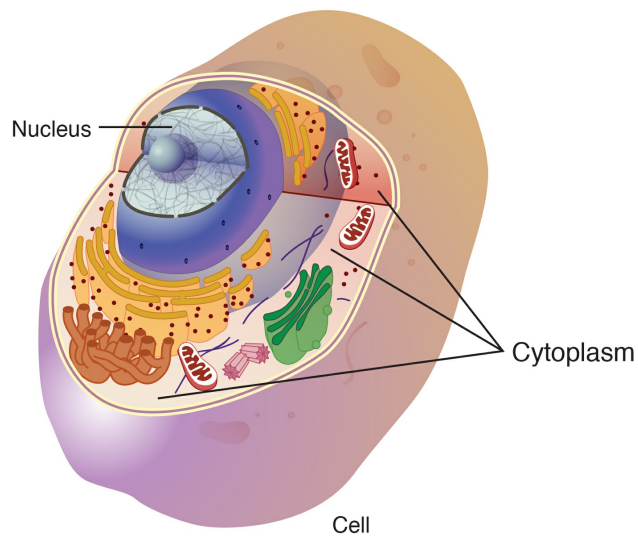


# Cytoplasm

National Human Genome Research Institute (NHGRI)

## Source

National Human Genome Research Institute (NHGRI). *Cytoplasm*.



Figure

Cytoplasm is the gelatinous liquid that fills the inside of a cell. It is composed of water, salts, and various organic molecules. Some intracellular organelles, such the nucleus and mitochondria, are enclosed by membranes that separate them from the cytoplasm.