

[Open Peer Review on Qeios](#)

Is gastrulation the most important time in your life?

Marta Linde

Funding: No specific funding was received for this work.

Potential competing interests: No potential competing interests to declare.

Abstract

Gastrulation is considered a fundamental process of metazoan embryogenesis, as the layers that give place to all body parts are laid down by extensive cell movements and cell differentiation. It is commonly thought that gastrulation establishes the entire body axis. The discovery of neuromesodermal progenitors is challenging this view. These cells keep their pluripotency after gastrulation and they are able to differentiate into ectoderm (neural tube) and mesoderm derivatives (paraxial mesoderm, notochord) directly, without passing through a germ layer intermediate. They contribute to the elongation of the body axis and could play a key role in the evolution of the chordate body plan.

Marta Linde-Medina

Independent Researcher, Palma, Spain

E-mail: linde.m@outlook.com

ORCID iD: 0000-0002-8141-6301

Keywords: body plan; gastrulation; organizers; neuromesodermal progenitors.

The term gastrulation was coined by Haeckel to refer to the transformation of an early embryo from a homogeneous, single-layered, hollow sphere (i.e., the blastula) to a heterogeneous, two-layered structure (i.e., the gastrula) (Fig. 1). He proposed that the gastrula was originated by the invagination of the blastula's outer layer— as when one squeezes a deflated ball with one finger —, and the differentiation of the resulting two layers (outer layer: ectoderm; inner layer: endoderm). This invagination gave place to a cavity lined by the endoderm, the primary intestine (Fig. 1). The term “gastrula” derives from the Greek root “γαστήρ” = *gaster*, which means “gut”, plus the Latin diminutive suffix “-ula”. Translated as “little gut”, Haeckel coined it to name the developmental stage at which this structure is formed (Haeckel 1872).

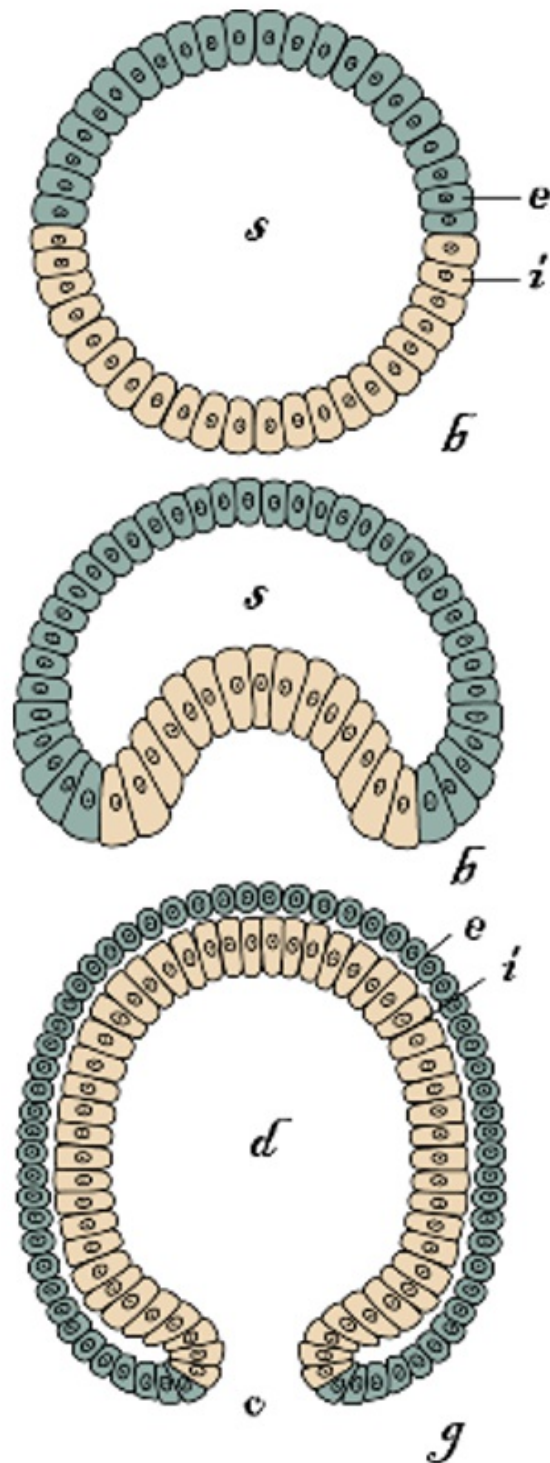


Figure 1. Gastrulation by invagination according to Haeckel. [*s*: germ cavity (*Furchungshöhle*); *e*: ectoderm (*Ektoderm*); *i*: endoderm (*Entoderm*); *d*: primary intestine (*Urdarmhöhle*); *o*: primary mouth (*Vrmund*); *b*: blastula; *g*: gastrula] [Redrawn from Haeckel (1874) Table II].

He proposed that embryonic development recapitulates the evolution of a taxon, that is, the *adult* forms of their ancestors (called Haeckel's biogenetic law). By identifying a gastrula stage in all metazoans, Haeckel wanted to provide evidence in

support of Darwin's theory of common descent. The gastrula would correspond to their common ancestor, a hypothetical animal he called *Gastraea* (Levit et al. 2022). Contrary to Haeckel's expectations, however, gastrulation is highly variable among metazoans, being tissue invagination one of several mechanisms capable of generating tissue layers. The author also considered cell ingression as a mechanism of gastrulation (Levit et al. 2022), but the important point in support of his theory was not a specific mechanism, but its conservation across the animal kingdom. Furthermore, mechanisms of gastrulation are not mutually exclusive (i.e., they can conjointly contribute to the formation of a gastrula), and they do not reflect phylogenetic relationships (closely related taxa can display different gastrulation modes, and *vice versa*). This has led to re-thinking how embryonic development could have evolved (Steventon et al. 2021; Uesaka et al. 2022)

According to Haeckel's *Gastraea* theory, all metazoans would pass through a two-layered gastrula stage, which means that the third layer of triploblastic metazoans (i.e., the mesoderm), would develop the last. However, in many metazoans the mesoderm derives from the endomesoderm, or mesendoderm, a cell/tissue capable of differentiating into endoderm and mesoderm, i.e. the two layers differentiate simultaneously (McClay et al. 2021). Finally, the primary intestine, if vestigially present, does not give place to the gut in some animals (e.g., chicken), i.e., their gastrula does not present the structure that gave it its name.

Although the gastrula does not develop as expected by Haeckel, the term has prevailed to define the stage at which the germ layers develop. This includes both their morphogenesis and their differentiation (Stern 1992), and it is independent of: 1) the temporal sequence of these two events, 2) the specific morphogenetic mechanism, 3) the number of germ layers, and 4) its relationship with gut morphogenesis. According to it, gastrulation is a common characteristic of all metazoans, except sponges. The latter develop two tissue layers by the morphogenetic mechanisms characteristic of gastrulation, but they lack the fate determination and stability that define them (Nakanishi et al. 2014). Based on this observation, some authors have stressed that the common feature of all metazoans is not gastrulation, but its morphogenetic component only (Ereskovsky and Dondua 2006).

It is commonly thought that the formation of the germ layers is complete after gastrulation, i.e., that the whole body axis is laid down during this process. This led Wolpert to state "it is not birth, marriage, or death, but gastrulation which is truly the most important time in your life" (Hopwood 2022). In *Xenopus*, the whole body axis is established during gastrulation, except the tail. This has led to a long-standing controversy as to whether the tail forms by the growth of established structures or anew from undifferentiated tissue, independently from gastrulation (Handrigan 2003). This incompleteness is more remarkable in amniotes, as only the head and the most anterior structures have been specified at the gastrula stage (Stern et al. 2006). This is because the process of gastrulation, i.e., the internalization of cells to form different germ layers, continues after the gastrula stage in this group (Stern et al. 2006). However, it is not the only process that contributes to the elongation of their body axis. In addition, an organizer appears at the anterior region of the primitive streak, called the node (Fig. 2). After the gastrula stage, the node – conjointly with the primitive streak – regresses in a head-to-tail progression laying down part of the body axis, specifically: the notochord, the floor plate and the medial somites (Solovieva et al. 2022a; Solovieva et al. 2022b). When most of the trunk structures have been established, the node forms part of the tailbud, which continues elongating the body (Guillot et al. 2021; Solovieva et al. 2022b).

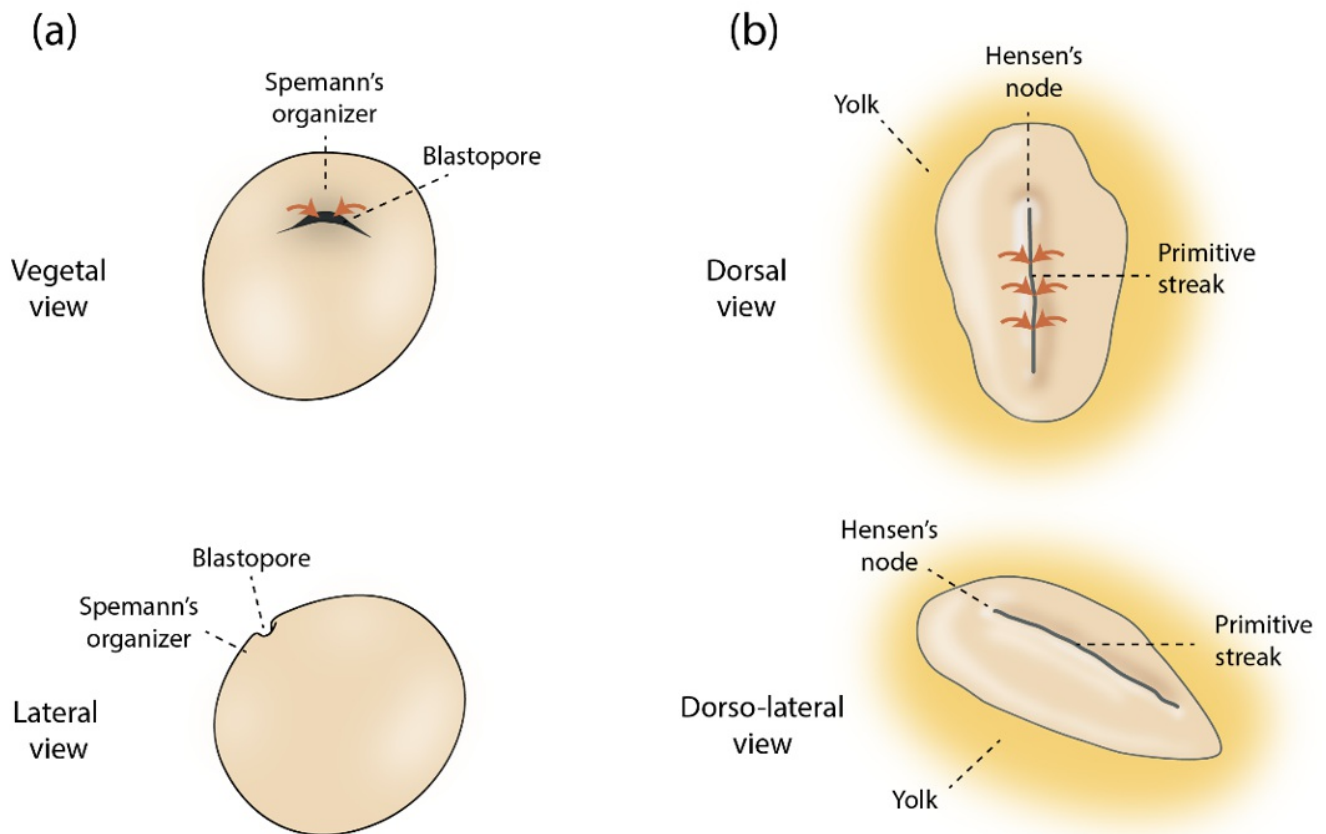


Figure 2. Initiation of gastrulation in the frog and the chicken embryo. (a) In frogs, cells of the blastula's outer layer internalize (brown arrows) through the blastopore. This movements are regulated by the organizer (Spemann's organizer). (b) In chickens and humans, the blastula forms a disc-like shape rather than a sphere [compare the lateral views in (a) and (b)]. The equivalent to the blastopore is an elongated groove, the primitive streak, through which cells internalize (brown arrows). The node (Hensen's node in the chick) is located anterior to the primitive streak and it is commonly considered homologous to the Spemann's organizer (but see Martínez-Arias and Steventon 2018).

Recent studies have shown the existence of pluripotent cells capable of differentiating into neural tube and paraxial mesoderm located at the node in chickens, and the node-streak border in mouse (Guillot et al. 2021; Solovieva et al. 2022a). A recent study has shown they can also give place to the notochord in zebrafish (Lange et al. 2023). Therefore, tissues that generally derive from different germ layers (ectoderm and mesoderm), can also be derived from these pluripotent cells, called neuromesodermal progenitors (NMPs), without passing through a germ layer intermediate, i.e., independently from gastrulation. Located at the interface between the ectoderm and the mesoderm (Wood et al. 2019), they may help to zip the body axis, assuring its functionality. The zipping of the ectoderm and the mesoderm could play a key role in the evolution the chordate body plan (Sato et al. 2023).

The discovery of the NMPs challenges the common view that gastrulation establishes the whole body axis. Coming back to the title question: is gastrulation the most important time in your life? Yes, for most of your body, except part of the spinal cord, vertebral column, ribs, and the coccyx (what remains from the human tail [Beck 2015]), assuming a similar contribution of NMPs between the chick and the human embryo (Guillot et al. 2021; Solovieva et al. 2022a). This answer is based on the most common definition of gastrulation (see previous paragraphs), but if redefined as "a process whereby

the embryo acquires a system of coordinates to organize and position the primordia for the different tissues and organs” as recently suggested (Steventon et al. 2021), gastrulation would be the most important time to your entire body.

Like in the case of sponges, a definition of gastrulation that leaves out some animal taxa may be seen as “undesired” by some researchers, however, stretching the term to include all them, would hide key embryological differences that could help to better understand the evolution of their body plans.

References

- Beck CW (2015) Development of the vertebrate tailbud. *Wiley Interdiscip Rev Dev Biol* 4:33-44.
- Ereskovsky AV, Dondua AK (2006) The problem of germ layers in sponges (Porifera) and some issues concerning early metazoan evolution. *Zool Anz* 245:65-76.
- Guillot C, Djeflal Y, Michaut A, Rabe B, Pourquié O (2021) Dynamics of primitive streak regression controls the fate of neuromesodermal progenitors in the chicken embryo. *Elife* 10.
- Haeckel E (1872) *Die Kalkschwämme: Eine Monographie*. Verlag von Georg Reimer, Berlin.
- Haeckel E (1874) *Anthropogenie oder Entwicklungsgeschichte des Menschen*. Gemeinverständliche wissenschaftliche Vorträge über die Grundzüge der menschlichen Keimes- und Stammesgeschichte. Wilhelm Engelmann, Leipzig.
- Handrigan GR (2003) Concordia discors: duality in the origin of the vertebrate tail. *J Anat* 202:255-267.
- Hopwood N (2022) 'Not birth, marriage or death, but gastrulation': the life of a quotation in biology. *Br J Hist Sci* 55:1-26.
- Lange M, Granados A, VijayKumar S, Bragantini J, Ancheta S, Santhosh S, Borja M, Kobayashi H, McGeever E, Solak AC, Yang B, Zhao X, Liu Y, Detweiler A, Paul S, Mekonen H, Lao T, Banks R, Jacobo A, Balla K, Awayan K, D'Souza S, Haase R, Dizeux A, Pourquié O, Gómez-Sjöberg R, Huber G, Serra M, Neff N, Pisco AO, Royer LA (2023) Zebrahub – Multimodal zebrafish developmental atlas reveals the state transition dynamics of late vertebrate pluripotent axial progenitors. *bioRxiv* March 07.
- Levit GS, Hoßfeld U, Naumann B, Lukas P, Olsson L (2022) The biogenetic law and the Gastraea theory: From Ernst Haeckel's discoveries to contemporary views. *Journal of Experimental Zoology Part B: Molecular and Developmental Evolution* 338:13-27.
- Martínez-Arias A, Steventon B (2018) On the nature and function of organizers. *Development* 145.
- McClay DR, Croce JC, Warner JF (2021) Conditional specification of endomesoderm. *Cells Dev* 167:203716.
- Nakanishi N, Sogabe S, Degnan BM (2014) Evolutionary origin of gastrulation: insights from sponge development. *BMC Biol* 12:26.
- Sato Y, Narasaki I, Kunimoto T, Moriyama Y, Hashimoto C (2023) The complete dorsal structure is formed from only the blastocoel roof of *Xenopus* blastula: insight into the gastrulation movement evolutionarily conserved among chordates. *Development Genes and Evolution*.
- Solovieva T, Lu HC, Moverley A, Plachta N, Stern CD (2022a) The embryonic node behaves as an instructive stem cell

niche for axial elongation. PNAS 119.

- Solovieva T, Wilson V, Stern CD (2022b) A niche for axial stem cells - A cellular perspective in amniotes. *Dev Biol* 490:13-21.
- Stern CD (1992) Vertebrate gastrulation. *Curr Opin Genet Dev* 2:556-561.
- Stern CD, Charité J, Deschamps J, Duboule D, Durston AJ, Kmita M, Nicolas JF, Palmeirim I, Smith JC, Wolpert L (2006) Head-tail patterning of the vertebrate embryo: one, two or many unresolved problems? *Int J Dev Biol* 50:3-15.
- Steventon B, Busby L, Martínez-Arias A (2021) Establishment of the vertebrate body plan: Rethinking gastrulation through stem cell models of early embryogenesis. *Dev Cell* 56:2405-2418.
- Uesaka M, Kuratani S, Irie N (2022) The developmental hourglass model and recapitulation: An attempt to integrate the two models. *J Exp Zool Part B* 338:76-86.
- Wood T, Kyrsting A, Stegmaier J, Kucinski I, Kaminski CF, Mikut R, Voiculescu O (2019) Neuromesodermal progenitors separate the axial stem cell zones while producing few single- and dual-fated descendants. *bioRxiv*.